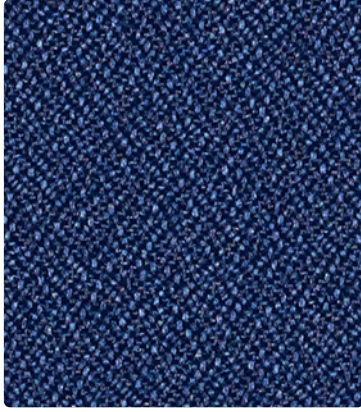


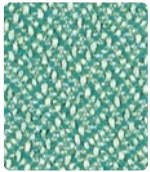
FORTE



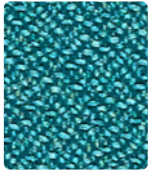
298-004
Cadet



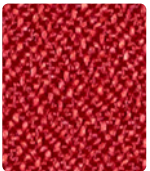
298-017
Pumice



298-033
Fairway



298-044
Peacock



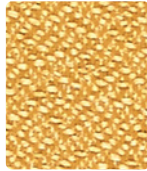
298-001
Rouge



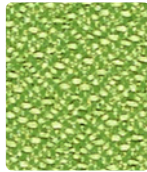
298-026
Flint



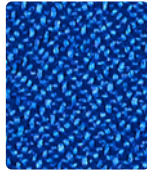
298-036
Char



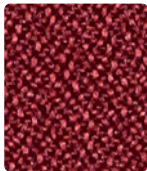
298-012
Sunray



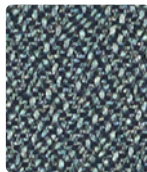
298-053
Grass



298-014
Blue Ray



298-011
Port

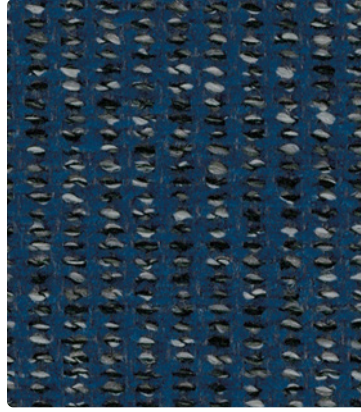


298-016
Slate



298-006
Tuxedo

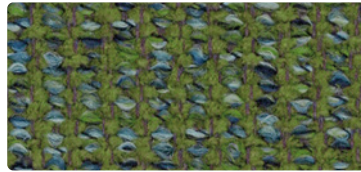
FIJI



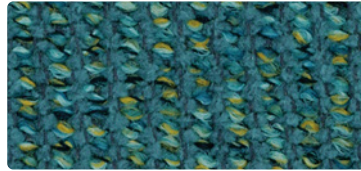
458-004
Marine



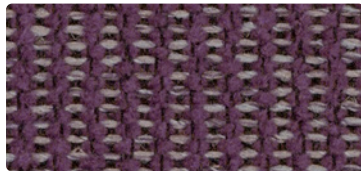
458-007
Creme



458-013
Evergreen



458-014
Grotto



299-021
Red Baron

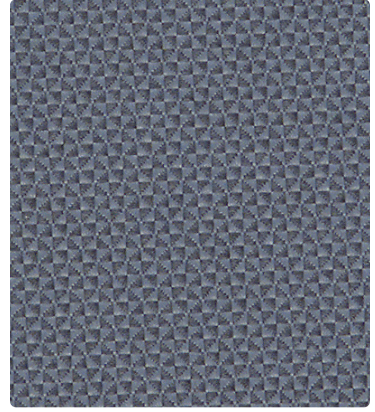


458-017
Aluminum

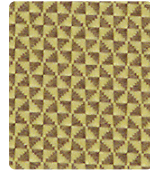


458-016
Charcoal

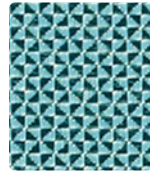
QUATTRO



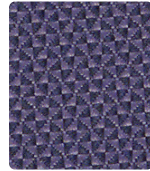
300-024
Laguna



300-002
Wheat



300-023
Mallard



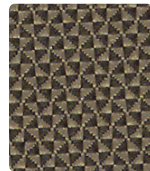
300-004
Midnight Blue



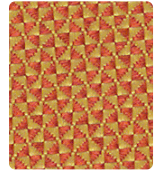
300-011
Hibiscus



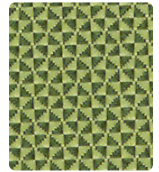
300-036
Pumice



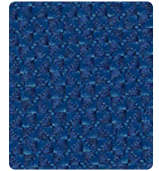
300-016
Khaki



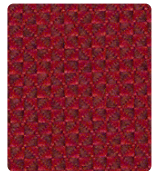
300-019
Golden Orange



300-003
Spring Green



300-014
Skyway



300-001
Deep Crimson



300-026
Mercury



300-006
Granite

TECHNICAL INFORMATION

Interactive Card

Pattern 54"	Content and Backing	Certifications	Weight/ Linear Yd.	Pattern Repeat	Finish	Abrasion Wyzenbeek	Light- Fastness	Flammability	Cleaning Code
FUJI <i>Directional</i>	61% Polyester, 39% Olefin Backing: Acrylic	GREENGUARD Gold	17.184 oz.	0.906" H, 0.406" V Non- Matching	Nano-Stain Repellent - PFOA & PFOS Free	60,000^ Double Rubs	40 hours	Cal. 117-2013 NFPA 260/UFAC Class 1	WS, BC
FORTE <i>Multi-use+</i>	100% Polyester Backing: Acrylic	GREENGUARD Gold	12.1 oz.	None	Stain Repellent	183,000^ Double Rubs	40 hours	Cal. 117-2013 NFPA 260/UFAC Class 1 ASTM E84 (Adhered) Class 2 or B	WS
QUATTRO <i>Directional Multi-use+</i>	100% Polyester Backing: Acrylic	GREENGUARD Gold	13.06 oz.	Non- Matching	Stain Repellent	237,000^ Double Rubs	40 hours	Cal. 117-2013 NFPA 260/UFAC Class 1 ASTM E84 (Unadhered) Class 1 or A IMO A.652(16)8.2	S

REDUCED ENVIRONMENTAL IMPACT

These products are GREENGUARD Gold Certified for low chemical and particle emissions to UL standard UL 2818 and may contribute to LEED certification.

CARE AND CLEANING INFORMATION

S: Solvent WS: Water/Solvent Cleaner

BC: Bleach Cleanable – 1 part bleach, 9 parts water = 10% bleach, 90% water solution. Do not clean/disinfect fabric for longer than 10 minutes using the 10% bleach solution. Always rinse promptly with clean water after applying the bleach solution. Failure to do so will void any and all warranties.

DYE TRANSFER DISCLAIMER

Certain clothing and accessory dyes (such as those used on denim jeans) may migrate to lighter colors. This phenomenon is increased by humidity and temperature and is irreversible. Mayer Fabrics will not assume responsibility for dye transfer caused by external contaminants. Please check compatibility when using this product in combination with painted or varnished surfaces.

ADDITIONAL INFORMATION

^Abrasion test results exceeding ACT Performance Guidelines are not an indicator of product lifespan. Multiple factors affect fabric durability and appearance retention.

+A multi-use fabric that can be used for upholstery, panels, wrapped walls, and acoustic.

Warranty: Please refer to the Mayer website for warranty information by pattern.

Custom Colors: All patterns can be custom colored. Minimum yardage applies.

Digital Swatch Card Color Matching: Due to color variations on different monitors and color printers, actual swatch colors may vary slightly. Please request a memo sample from Mayer Fabrics to ensure proper color representation.

Complete and current product information available at mayerfabrics.com.



These fabrics meet or exceed these ACT performance guidelines.
*Certification Marks owned by ACT®

©2023
SWGF0CD MF0823

SAUDER
MANUFACTURING CO.

Sauder® Manufacturing Co.
930 W. Barre Rd.
PO Box 230
Archbold, Ohio 43502
T 800.537.1530
F 419.446.4945

Pews / Chairs



Chairs



*Forte also approved for auditorium

MAYERFABRICS

T 800.428.4415 mayerfabrics.com
500 S. Kitley Ave. Indianapolis, IN 46219