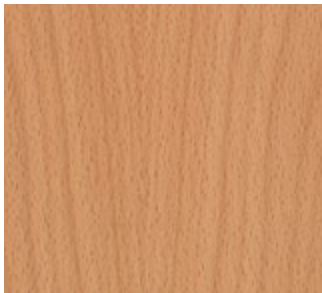


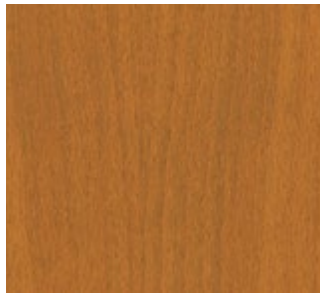
## EUROPEAN BEECH SOLID WOOD FINISHES

Simulating the natural variations in the color and grain of wood with a printing process will not produce an exact match to the finished product. This card is to be used as an indicator of color and grain. We recommend any final selection be made after viewing physical samples (color or material chips) in the lighting and environment in which the products will be used.

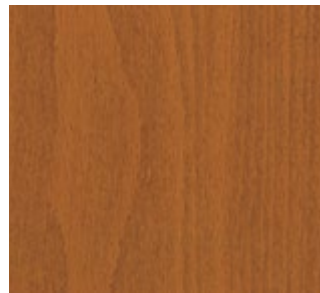
All color samples are reviewed for accuracy under cool white fluorescent light. If you have questions about any aspect of our finish process, please ask your consultant for more information.



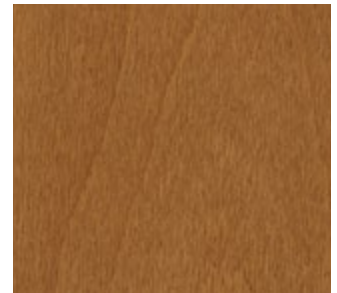
73 Natural



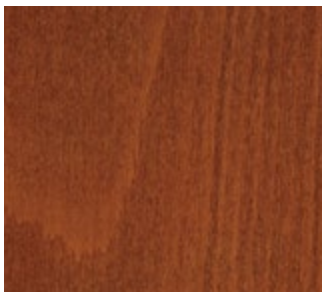
74 Amber



04 Chestnut



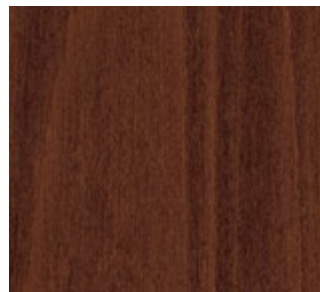
75 Honey



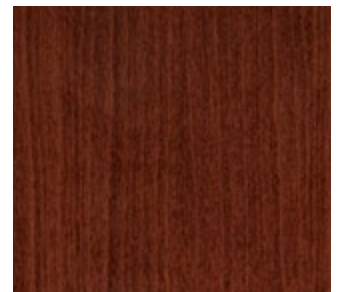
31 Colonial Cherry



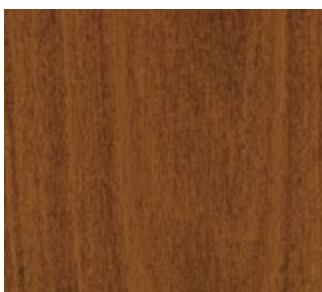
78 Urban Cherry



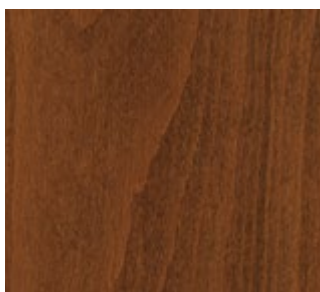
33 Cherry



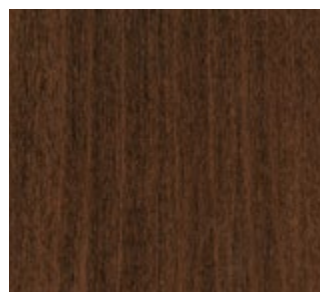
79 Mahogany



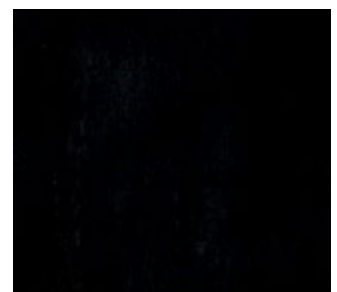
12 Pecan



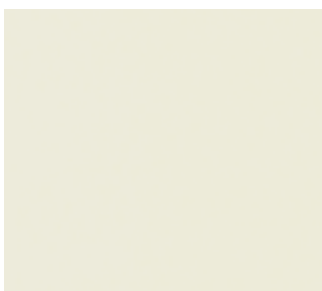
76 Nutmeg



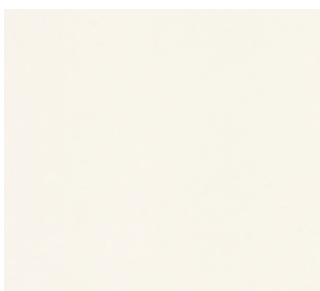
77 Henna



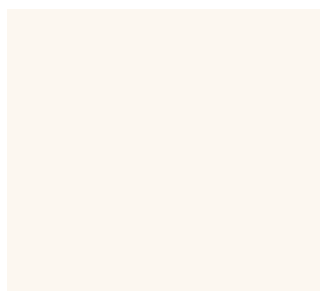
83 Black



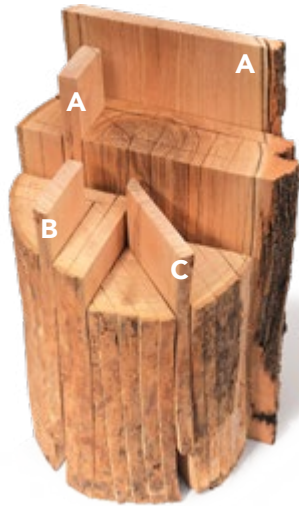
56 Eggshell



57 Cream



58 White



▼ LUMBER CUTTING OPTIONS

A – FLAT/PLAIN SAWN



B – RIFT SAWN



C – QUARTER SAWN



PRODUCTS OF NATURE'S INFINITE VARIETY, trees are products of their environment. The minerals in the soil, the amount of sunlight and rainfall, are the subtle variations reflected in the grain.

WOODS ARE CAREFULLY SELECTED for uniformity and color consistency. Due to nature's wonderful diversity, no two grains will ever be exactly the same, nor will they accept stain in exactly the same manner. After all, variations in grain provides natural woods with their unique warmth, texture and beauty.

ONLY USING SUSTAINABLE SOURCING of managed forestry for preservation of our communities and environment. We also have capability of drying our wood in Archbold, Ohio.

A 3-STEP FINISHING PROCESS that utilizes a 2-part polyurethane finish ensures a lasting beauty, and meets or exceeds all applicable environmental requirements and concerns. The quality and durability of our finishes are reflected in our 25-year bench and 10-year chair warranty.

CUSTOM COLOR MATCHING is available in addition to the many standard colors offered.

THE INDUSTRIES' LARGEST OFFERING OF SPECIES, we proudly offer flat/plain sawn Northern Red Oak, European Beech, Cherry, Hard Maple, Northern White Oak, Rift Northern Red Oak, Rift Northern White Oak, African Mahogany and Black Walnut.

Only Beech is used in the production of plybent chairs.



[saudercourtroom.com](http://saudercourtroom.com) ■ 800-537-1530 ■ [sales@saudercourtroom.com](mailto:sales@saudercourtroom.com)