

Kindred 2



Bangle
Baltic



Cork



Orchid



Granite



Teak



Suede



Sable



Insight
Periwinkle



Blond



Fossil



Wasabi



Shale



Summit



Pepper



Real Red



Port



Midnight



Bark



Eggplant



Ebony



Current
Cadet



Birch



Pecan



Eclipse



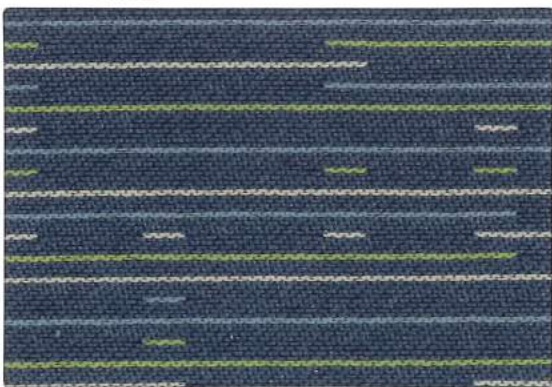
Moss



Plum



Espresso



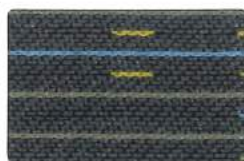
Jot
Baltic



Fossil



Scarlet



Shadow



Onyx



Tradition
Theater



Latte



Frond



Malbec



Class



Regal



Sly



Faux Felt
Vibrant



Pumice



Stone



Camel



Sprout



Lagoon



Flannel



Path



Coral



Bark



Pool



Quail



Charcoal



Fuse
Carmine



Saffron



Cress



Iris



Azurean



Lunar



Pepper



Habit
Tailor



Aspen



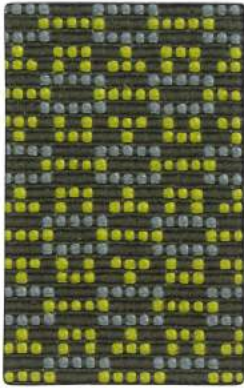
Kindle



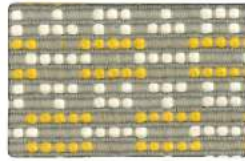
Dune



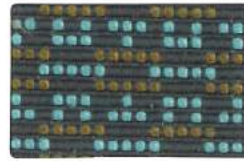
Blueprint



Bobby
Moss



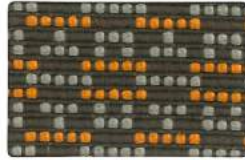
Lemon



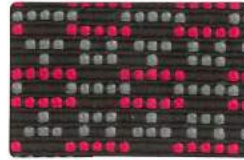
Aqua



Anchor



Glow



Fuchsia



Iris



Cover Cloth
Sorrel



Platinum



Zest



Cyan



Shire



Taupe



Vesper



Antique



Flame



Hickory



Electric



Indigo



Graphite



Epic
Kiwi



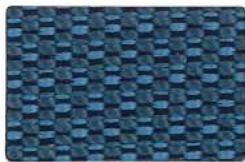
Jute



Capri



Granite



Azure



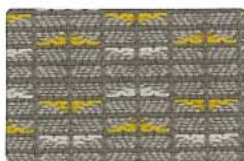
Flare



Regal



Slice
Charcoal



Miller



Pumice



Henna



Admiral

Kindred 2

Width - Pattern	Fiber Content & Backing	Finish	Abrasion (D.R.)	Light-fastness	Approx. Repeats	Directional	Cleaning Code
54" BANGLE ☛☛☛☛☛*	58% Post Consumer Recycled Polyester, 42% Polyester Acrylic Backing	Soil & Stain Resistant	51,000	40 Hrs. Class 4.5			WS
54" BOBBY ☛☛☛☛☛*	68% Repreve® Post Consumer Recycled Polyester, 32% Polyester Acrylic Backing		150,000	40 Hrs. Class 3.5	7/8" L, 1/2" W		WS
59" COVER CLOTH ☛☛☛☛☛*	56% Repreve® Post Consumer Recycled Polyester, 44% Polyester	Crypton® Green	200,000	40 Hrs. Class 4			W BC (10:1)
56" CURRENT ☛☛☛☛☛*	100% Post Consumer Recycled Polyester Acrylic Backing	Soil & Stain Resistant	100,000	40 Hrs. Class 4	13" L, 7 1/4" W		WS
54" EPIC ☛☛☛☛☛*	50% Polyester, 32% Post Industrial Recycled Polyester, 18% Post Consumer Recycled Polyester Acrylic Backing	Soil & Stain Resistant	100,000	40 Hrs. Class 5	3/8" L, 1/8" W		WS
56" FAUX FELT ☛☛☛☛☛*	62% Repreve® Post Consumer Recycled Polyester, 38% Polyester Acrylic Backing	Crypton® Green	75,000	40 Hrs. Class 4.5			WS BC (10:1)
54" FUSE ☛☛☛☛☛*	65% Post Industrial Recycled Polyester, 35% Post Consumer Recycled Polyester Latex Backing	Soil & Stain Resistant	100,000	40 Hrs. Class 4.5			WS
54" HABIT ☛☛☛☛☛*	100% Post Consumer Recycled Polyester Acrylic Backing	Soil & Stain Resistant	50,000	40 Hrs. Class 4.5	1 5/8" L, 3" W	Yes	WS
54" INSIGHT ☛☛☛☛☛*	100% Post Consumer Recycled Polyester Acrylic Backing	Soil & Stain Resistant	192,000	40 Hrs. Class 5	1/4" L, 1/2" W		WS
56" JOT ☛☛☛☛☛*	100% Repreve® Post Consumer Recycled Polyester Acrylic Backing		100,000	40 Hrs. Class 4.5	10" L, 5" W	Yes	W
54" SLICE ☛☛☛☛☛*	84% Repreve® Post Consumer Recycled Polyester, 16% Polyester Acrylic Backing		80,000	40 Hrs. Class 5	7/8" L, 3/4" W		WS
56" TRADITION ☛☛☛☛☛*	72% Post Consumer Recycled Polyester, 28% Polyester Acrylic Backing	Soil & Stain Resistant	200,000	40 Hrs. Class 4	1/8" L, 1/8" W		WS

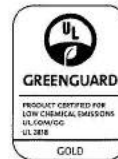
*ACT® Registered Certification Marks

CLEANING CODE DEFINITIONS

W: Water-based cleaning foam or cleaners.

WS: Water-based cleaning agents or foam.

BC: Bleach Cleanable.



GREENGUARD Gold Certified. CA Section 01350 compliant. Eligible for CHPS Low-Emitting Material Credits.

SAUDER

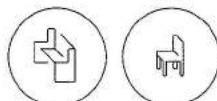
WORSHIP SEATING®

Sauder Manufacturing Company
930 W. Barre Road
PO Box 230
Archbold, OH 43502

Toll Free: 800.537.1530
Fax: 419.446.3697
sauderworship.com

Approved for use on:

Pews Chairs



*Current, Cover Cloth, Faux Felt, Habit, Slice, Tradition also approved for auditorium

For memo samples please contact:

MOMENTUM
TEXTILES

800-366-6839
memosamples.com