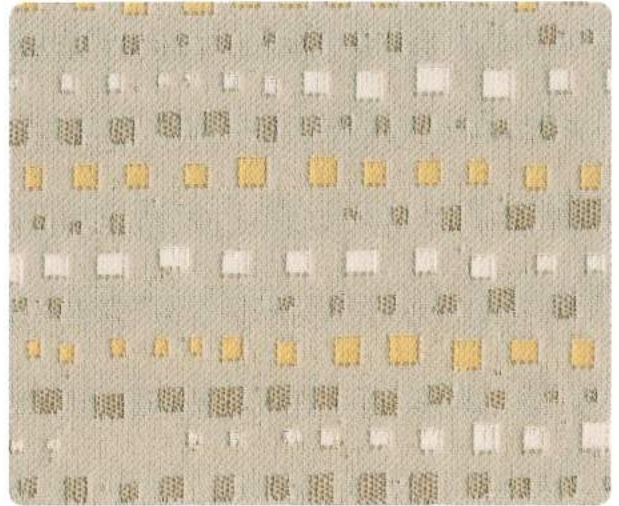


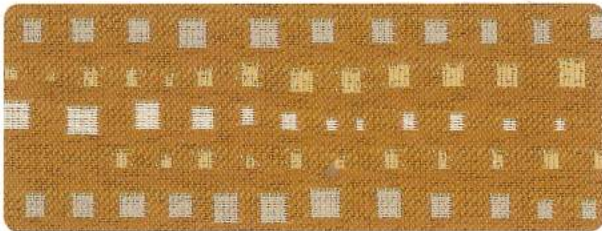
UPHOLSTERY 2551ECHO



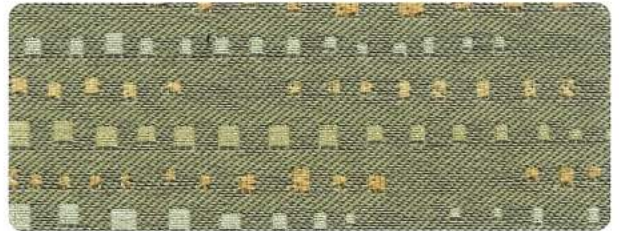
7050 **Henna**



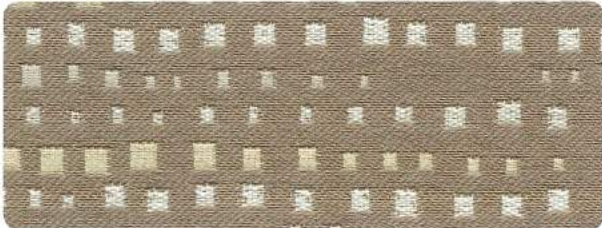
7060 **Natural**



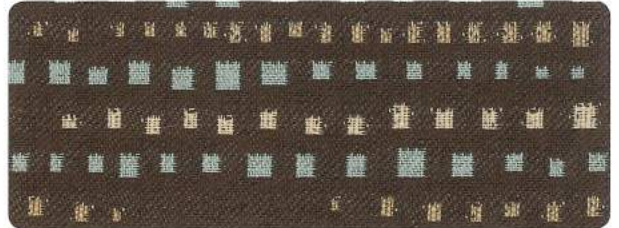
7020 **Gold**



7030 **Lichen**



7010 **Limestone**



7032 **Oxide**



7040 **Cedar**



7041 **Cabochon**



7080 **Seaport**



7042 **Peppercorn**

Upholstery Specifications

Style	255I Echo*
Contents	100% pre-consumer recycled polyester
Weight	10 ± 0.5 oz./lin. yd.
Width	54" min. useable
Repeat	11.25" vertical, 6.75" horizontal
Backing	None
Treatment	polyester binder
Cleaning Code	W-S
	Clean with water-based cleaning agents, foam or pure, water-free solvents. Vacuuming or light brushing is recommended to prevent dust and soil buildup.
Performance	
Breaking strength (ASTM D5034)	225 lbf min. warp and 200 lbf min. fill
Tear (ASTM D2261)	15 lbf min. warp and fill
Seam Slippage (ASTM D4034)	70 lbf min. warp and fill
Pilling resistance (ASTM D3511)	Class 4 min.
Colorfastness to light (AATCC 16.3 Option 3)	Grade 4 min. at 40 hours
Colorfastness to crocking (AATCC 8)	Grade 4 min. dry, Grade 3 min. wet
Abrasion resistance (ASTM D4157)	100,000 double rubs min. - cotton duck
Flammability	
CA Technical Bulletin 117-2013 Section I	Passes
UFAC	Class I
NFPA 260	Class I

Please do not use for shade master. Colors may vary between dye lots. These are directional fabrics. Application testing of these products is recommended. Every effort has been made to ensure color accuracy of the digital images, however, please order a sample before specification. Proudly woven in North America supporting our local communities.

SAUDER
WORSHIP SEATING®

Sauder Manufacturing Company
930 W. Barre Road
PO Box 230
Archbold, OH 43502

Toll Free: 800.537.1530
Fax: 419.446.3697
sauderworship.com

Approved for use on:

