

# UPHOLSTERY 9936 WHIRL



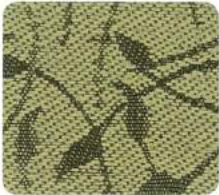
5030 Gold



5040 Caramel



5021 Rust



5061 Pesto



5091 Spinach



5011 Chestnut



5130 Sangria



5070 Cadet



5140 Shadow



5080 Linen

# UPHOLSTERY 9266 TRACERY



5020 Khaki



5060 Golden



5080 Persimmon



5030 Taupe



5010 Peacock



5041 Azure



5070 Chestnut



5050 Crimson



5040 Iris



5021 Chive

# Upholstery Specifications

Style	9936 Whirl*	9266 Tracery
<b>Contents</b>	48% post-consumer recycled polyester 52% pre-consumer recycled polyester	100% pre-consumer recycled polyester
<b>Weight</b>	10.9 ± 1.0 oz./lin. yd.	9.9 ± 1.0 oz./lin. yd.
<b>Width</b>	54" min. useable	54" min. useable
<b>Repeat</b>	2.25" vertical, 3.6" horizontal	4.25" vertical, 4.75" horizontal
<b>Backing</b>	SBR backcoating	acrylic backcoating
<b>Treatment</b>	BLOCKaide® stain repellent	BLOCKaide® stain repellent
<b>Cleaning Code</b>	W-S	W-S
	Clean with water-based cleaning agents, foam or pure, water-free solvents. Vacuuming or light brushing is recommended to prevent dust and soil buildup.	Clean with water-based cleaning agents, foam or pure, water-free solvents. Vacuuming or light brushing is recommended to prevent dust and soil buildup.
<b>Performance</b>		
<b>Breaking strength (ASTM D5034)</b>	150 lbf min. warp and 120 lbf min. fill	175 lbf min. warp and 100 lbf min. fill
<b>Tear (ASTM D2261)</b>	10 lbf min. warp and fill	10 lbf min. warp and fill
<b>Seam Slippage (ASTM D4034)</b>	75 lbf min. warp and 65 lbf min. fill	60 lbf min. warp and fill
<b>Pilling resistance (ASTM D3511)</b>	Class 4 min.	Class 4 min.
<b>Colorfastness to light (AATCC 16.3 Option 3)</b>	Grade 4 min. at 40 hours	Grade 4 min. at 40 hours
<b>Colorfastness to crocking (AATCC 8)</b>	Grade 4 min. dry, Grade 3 min. wet	Grade 4 min. dry, Grade 3 min. wet
<b>Colorfastness to water (AATCC 107)</b>	Class 3 min. for staining, Class 4 min. for color change	Class 3 min. for staining, Class 4 min. for color change
<b>Abrasion resistance (ASTM D4157)</b>	50,000 double rubs min. - cotton duck	75,000 double rubs min. - cotton duck
<b>Flammability</b>		
<b>CA Technical Bulletin 117-2013 Section I</b>	Passes	Passes
<b>UFAC</b>	Class I	Class I
<b>NFPA 260</b>	Class I	Class I

Please do not use for shade master. Colors may vary between dye lots. These are directional fabrics. Application testing of these products is recommended. Every effort has been made to ensure color accuracy of the digital images, however, please order a sample before specification. Proudly woven in North America supporting our local communities.

**SAUDER**  
— WORSHIP SEATING®

Sauder Manufacturing Company  
930 W. Barre Road  
PO Box 230  
Archbold, OH 43502

Toll Free: 800.537.1530  
Fax: 419.446.3697  
sauderworship.com

**Approved for use on:**

Pews

Chairs



\* Whirl also approved for auditorium.