

UPHOLSTERY 52061 FLORA



9245 Tobacco



6535 Butterscotch



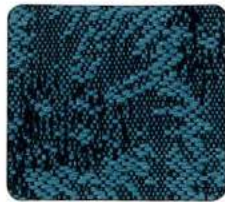
6565 Oyster



4225 Redwood



8407 Sage



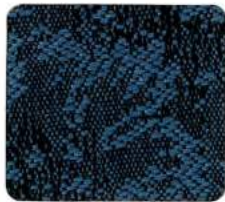
8474 Bluebell



9218 Violet



8477 Woodland



0614 Cornflower

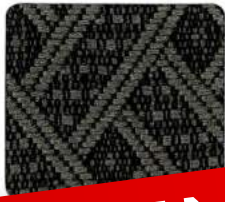


9228 Geranium

UPHOLSTERY 54103 BRAZIL



8737 Artichoke



8414 Navy



8434 Periwinkle



0605 Copper

DISCONTINUED PATTERN
Upholstery 54103 - Brazil

Upholstery Specifications

Style	52061	54103
Contents	60% nylon / 40% polyester	58% polypropylene / 42% recycled polyester
Weight	9.8 ± 1.0 oz./lin. yd.	8.9 ± 0.5 oz./lin. yd.
Width	54" min. useable	54" min. useable
Repeat	1.68" vertical and horizontal	1.375" vertical, .9375" horizontal
Backing	s.b.r. latex	s.b.r. latex
Treatment	BLOCKaide™	BLOCKaide™
Cleaning Code	W-S	W-S
	Clean with water-based cleaning agents, foam or pure, water-free solvents. Vacuuming or light brushing is recommended to prevent dust and soil buildup.	Clean with water-based cleaning agents, foam or pure, water-free solvents. Vacuuming or light brushing is recommended to prevent dust and soil buildup.
Performance		
Breaking strength (ASTM D5034)	100 lbf min. warp and 150 lbf min. fill	100 lbf min. warp and fill
Tear (ASTM D2261)	7 lbf min. warp and 10 lbf min. fill	10 lbf min. warp and 15 lbf min. fill
Seam Slippage (ASTM D4034)	40 lbf min. warp and fill	50 lbf min. warp and 45 lbf min. fill
Pilling resistance (ASTM D3511)	Class 4 min.	Class 4 min.
Colorfastness to light (AATCC 16 Option 3)	Grade 4 min. at 40 hours	Grade 4 min. at 40 hours
Colorfastness to crocking (AATCC 8)	Grade 4 min. dry, Grade 3 min. wet	Grade 4 min. dry, Grade 3 min. wet
Colorfastness to water (AATCC 107)	Class 3 min. for staining, Class 4 min. for color change	Class 3 min. for staining, Class 4 min. for color change
Abrasion resistance (ASTM D4157)	60,000 double rubs - cotton duck	30,000 double rubs - cotton duck
Flammability		
State of CA. Tech. Bulletin, 117 SEC. E	Passes	Passes
UFAC	Class I	Class I
NFPA 260	Class I	Class I

Please do not use for shade master. Colors may vary slightly between dye lots. These are directional fabrics. Application testing of these products is recommended. Proudly woven in the USA supporting our local communities.

Please check with us to confirm if fabric is compatible with your furniture selection.

SAUIDER®
— WORSHIP SEATING

Sauder Manufacturing Company
930 W. Barre Road
Archbold, OH 43502

Toll Free: 800.537.1530
Fax: 419.446.3697