

A & D Style

Fabric Collections From Absecon Mills & Douglass Industries

FEATURING...

WARP SPEED*»
IN STOCK
for quick delivery!



Sherpa & Shire »

Sherpa & Shire have been the hallmark of durability and cleanability since their inception. Cited by Interior Design magazine for their longevity as the best of the past 25 years, these fabrics are nearly impervious to damage.

UPHOLSTERY FABRIC **LL***
100% Marquésa Lana®

Marquésa 
Lana®

* Covered by a Limited Lifetime performance warranty.

Sherpa & Shire *Marquésa Lana polyolefin is an environmentally friendly product. It entails a mode of manufacturing that not only prevents damage to the environment, but actually reduces the carbon footprint by utilizing waste products from gasoline manufacturing. It is a byproduct of post-industrial waste and its manufacture produces no waste product.*



Shire Travertine



Sherpa Grey Mix



Shire Sage



Shire Pine



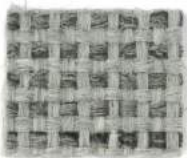
Shire Spa Blue



Sherpa Denim



Sherpa Gargoyle



Shire Greystone



Shire Heath



Sherpa Jade



Shire Turquoise



Shire Chesapeake



Shire Woodstock



Shire Horizon



Shire Limelight



Sherpa Teal



Shire Tahoe Blue



Sherpa Hudson Bay



Sherpa Clove



Shire Bison



Shire Pesto



Shire Aqueduct



Sherpa Ivy League



Shire Tuscan Blue



Sherpa Coffee



Sherpa Mahogany



Sherpa Billiard



Sherpa Hunter



Shire Mariner



Shire Potomac

WARP SPEED® >>>

IN STOCK
for quick delivery!

In our continuing efforts to provide you with the best service and quickest delivery, our most in-demand Sherpa and Shire colors are now in our Warp Speed® In Stock program.



Shire Sesame



Sherpa Brown Haze



Shire Blair Brown



Shire Steel Blue



Shire Titan Blue



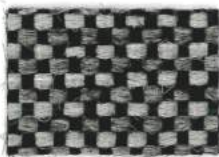
Sherpa Mocha



Shire Hopsack



Shire Fossil



Shire Black Marble



Shire Merrimac



Shire Koala



Shire Espresso



Shire Stonewall



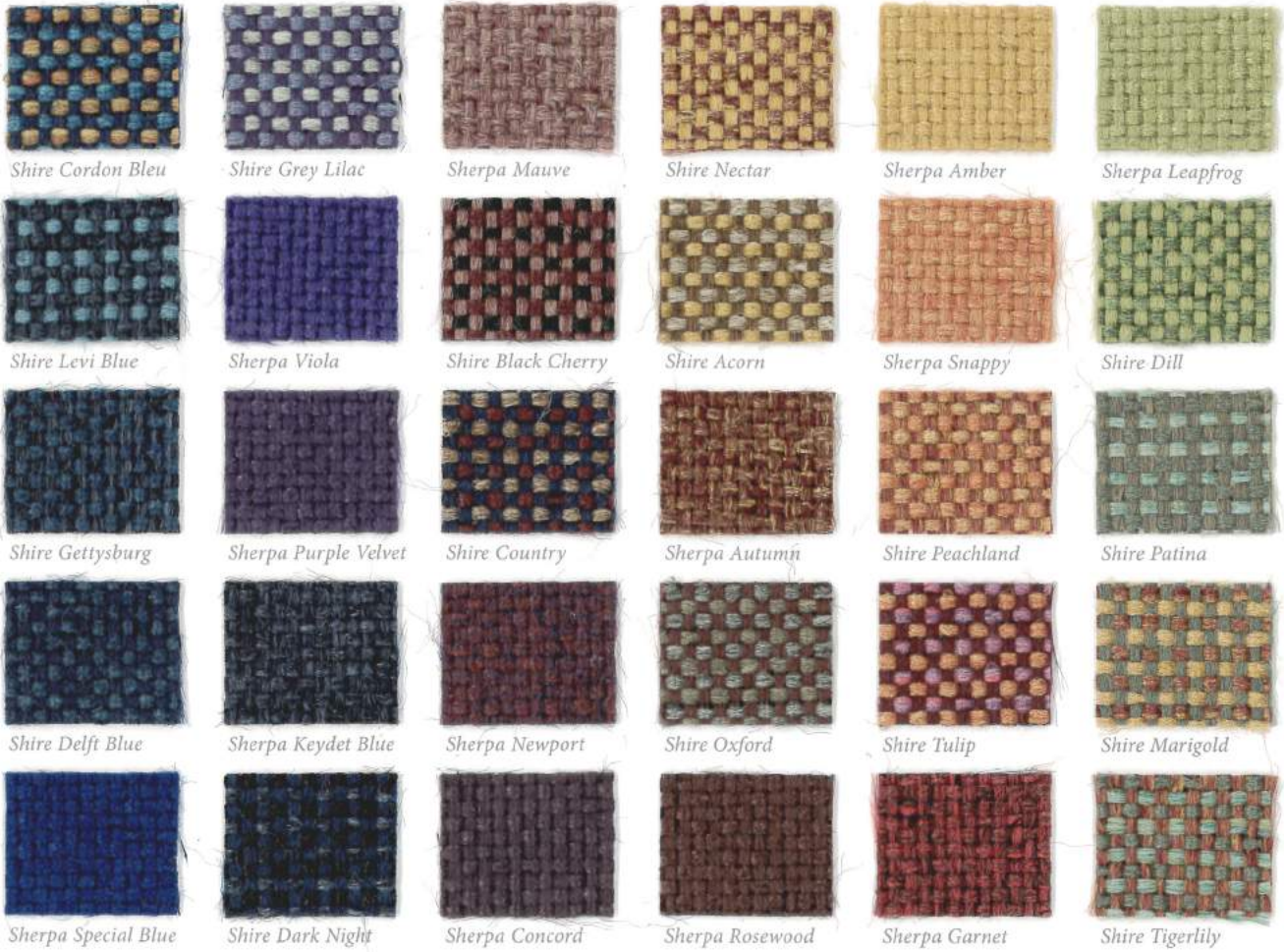
Sherpa Grey Heather



Sherpa Black

Its built in resistance to staining and wear eliminates the need for after market stain resistant finishes. It is recyclable and is unique in its utilization of conservation methods from inception to disposal.

Marquésa 
Lana®



We have carefully analyzed the popularity of the colors, and the resultant winners are represented here and are all available for immediate shipment. Only the items below the line are in the Warp Speed® Program.



Sherpa & Shire UPHOLSTERY FABRIC

LL* Patterns are covered by a limited lifetime performance warranty. Contact your sales representative for written warranty terms and conditions.

TECHNICAL INFORMATION

Fiber: 100% Marquésa Lana®

Backing | Finish: Acrylic

A Abrasion Resistance: 250,000 double rubs (wire screen)

Weight: 16.0 ounces per linear yard (±1 oz.); 494 g/m

Width: 54" (137-140 cm)

Repeat: None (Pattern is woven up the roll and suitable for railroading)

*** Lightfastness:** 400 Hours, Class 5

☘ Colorfastness: Wet - Class 5 | Dry - Class 5

☆ Seam Slippage: Warp - 91 lbs | Fill - 95 lbs.

Cleaning Instructions: WS - For water-based stains, use mild detergent foam or upholstery shampoo. For oil based stains, spot clean fabric with a dry cleaning solvent, being sure to test area first.

🔥 Flame Resistance: California Technical Bulletin 117-2013; NFPA 260

Fabrics by Absecon Mills, Inc. Fabric performance symbols indicate that a fabric performs to commercial furniture manufacturing standards and passes all applicable testing as specified by the Association for Contract Textiles (ACT).

08/2017 | For additional cards or memo samples:
email samples@aanddstyle.com



Absecon Mills is focused on being a responsible corporate entity and we are continually striving to find ways to help preserve our environment, increase energy efficiency and reduce waste. Our mode of manufacturing is specifically designed to prevent damage to the environment. Our products are woven using wind power and many are constructed with polypropylene (a by-product of gasoline manufacturing, utilizing post-industrial waste) and recycled polyester, which helps keep post-consumer waste in the material stream and out of landfills. Absecon offers finishes that use ten times less fluorocarbons than conventional finishes and are SCS Indoor Advantage Gold certified. We participate in a fabric recycling program and work hard to lessen our footprint on the environment. For more information on our green initiatives, please visit www.absecon.com.



WOVEN WITH WIND POWER

Colors may vary slightly from dye lot to dye lot.

*ASTM-D-4034: Seam 12mm from edge using 7 stitches per 25mm (1"), plain lock stitch and a 22 ballpoint needle)



SAUDER

WORSHIP SEATING®

Sauder Manufacturing Company
930 W. Barre Road
PO Box 230
Archbold, OH 43502

Toll Free: 800.537.1530
Fax: 419.446.3697
sauderworship.com

Approved for use on:

Pews



Chairs



Auditorium

