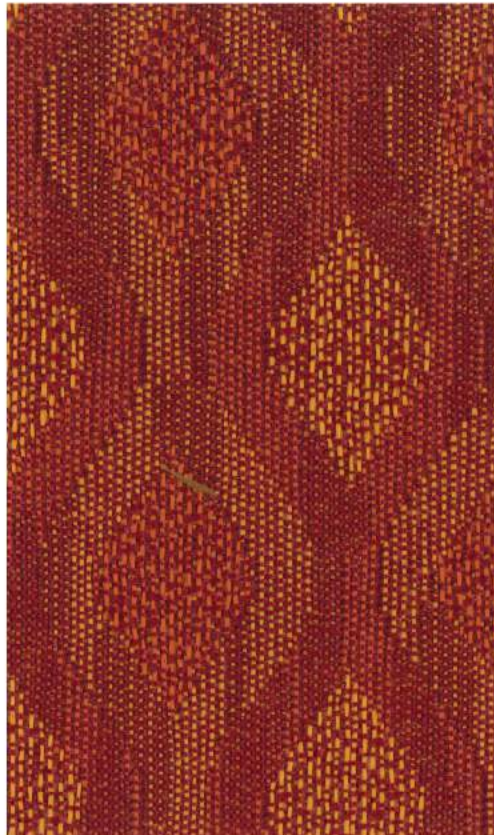


Ballard<sup>®</sup>



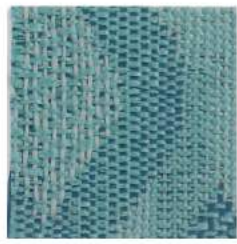
AUTUMN



SIDEWALK



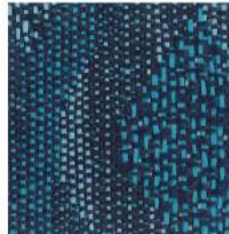
NATURAL



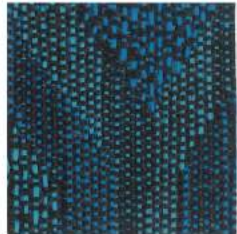
CLEARWATER



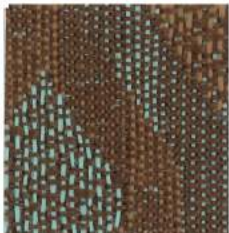
SAGE



BAY BLUE



SPORT BLUE



CLIFFSIDE

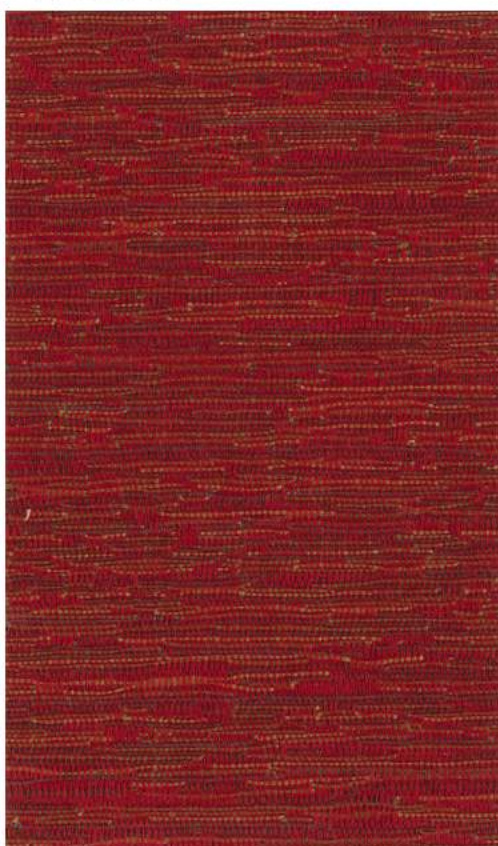


WOODBINE



GRAPHITE

Serrano<sup>®</sup>



CLASSIC RED



BRONZE



CROCUS



RED ROBIN



SAGE



BONNIE BLUE



DARK RED



PINECONE



HOMESTEAD



MIDNIGHT

\* Covered by a 5 year limited performance warranty.

# Ballard & Serrano

5\* Patterns are covered by a 5 year limited performance warranty. Contact your sales representative for written warranty terms and conditions.

TECHNICAL INFORMATION								
Pattern & Direction Usable Width: 54"	Fiber	Repeat	Backing   Finish	Weight (per yard)	Cleaning Code	Abrasion ASTM 4157 (Double Rubs)	Lightfastness AATCC 16E	Seam Slippage* ASTM-D-4034
<b>Ballard*</b> (Railroaded)	100% Polyolefin	5-1/8" H 7-1/8" V	Acrylic with Teflon®	15.6 oz.	WS	50,000 (Cotton Duck)	60 hours Class 5	Warp - 85 lbs Fill - 87 lbs
<b>Serrano</b> (Up the roll)	100% Polyester	N/A	Acrylic with Teflon®	10.6 oz.	WS	50,000 (Cotton Duck)	60 hours Class 5	Warp - 56 lbs Fill - 84 lbs

Cleaning Instructions: WS - For water based stains, use mild detergent foam or upholstery shampoo. For oil based stains, spot clean with a dry cleaning solvent being sure to test area first. Cleaning by a professional service is recommended.

Flame Resistance: California Technical Bulletin 117-2013; NFPA 260

Fabrics by Absecon Mills, Inc. Fabric performance symbols indicate that a fabric performs to commercial furniture manufacturing standards and passes all applicable testing as specified by the Association for Contract Textiles (ACT).

02/2018 | For additional cards or memo samples:

email [samples@absecon.com](mailto:samples@absecon.com) or call 1-877-356-4557



Absecon Mills is focused on being a responsible corporate entity and we are continually striving to find ways to help preserve our environment, increase energy efficiency and reduce waste. Our mode of manufacturing is specifically designed to prevent damage to the environment. Our products are woven using wind power and many are constructed with polypropylene (a by-product of gasoline manufacturing, utilizing post-industrial waste) and recycled polyester, which helps keep post-consumer waste in the material stream and out of landfills. Absecon offers finishes that use ten times less fluorocarbons than conventional finishes and are SCS Indoor Advantage Gold certified. We participate in a fabric recycling program and work hard to lessen our footprint on the environment. For more information on our green initiatives, please visit [www.absecon.com](http://www.absecon.com)



WOVEN WITH WIND POWER

Colors may vary slightly from dye lot to dye lot.

\*ASTM-D-4034: Seam 12mm from edge using 7 stitches per 25mm (1"), plain lock stitch and a 22 ballpoint needle



## SAUDER

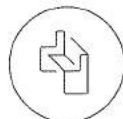
WORSHIP SEATING®

Sauder Manufacturing Company  
930 W. Barre Road  
PO Box 230  
Archbold, OH 43502

Toll Free: 800.537.1530  
Fax: 419.446.3697  
[sauderworship.com](http://sauderworship.com)

Approved for use on:

Pews



Chairs



\*Ballard also approved for Auditorium